

# Fridley Historical Society

611 Mississippi Street N.E.  
Fridley, Minnesota 55432

---

MEMBERS NEWSLETTER

---

Vol. 5, No. 1, Feb. 1992

---

## PRESIDENT'S UPDATE

Well, we all have made it through January with just slight cases of cabin fever. The Board has been busy planning for 1992. Things are happening at the Museum. First - the Quilt Exhibit that is presently there. The Senior Center Smorgasbord Quilters have loaned us some 20 quilts - all very beautiful. Chris Gerrity has also contributed to the Exhibit. Fay Hall from Minnesota Quilters spoke to us on quilting and showed some innovative clothing she has done. I challenge

those who were not interested in quilting to come up with something for our April meeting. How about it, Charlie and Jerry M.!!

Most important is our Annual Lasagna Dinner and Silent Auction.

Gloria Hayes has been working hard on this event. It will be held at the Community Ed Center on March 14 starting at 5 p.m. If you don't have your tickets, call Gloria at 571-3727 or you can purchase them at Schaaf Floral. This is our one big

### LASAGNA DINNER AND SILENT AUCTION

Where: Fridley Community Center

When: Saturday, March 14, 1992

Time: Doors open at 4:30 p.m.  
Dinner at 5:00 p.m.

COST: \$5.00

Door prizes

Order tickets by calling Gloria Hayes 571-3727. You can either pick them up from her or reserve them and pick them up at the door. Send your check prior to the dinner.



fund raiser of the year so please don't disappoint us.

We have several people to thank for donations to the Museum. The Fridley State Bank has given almost two dozen padded chairs and an old typewriter. Also, Jim Kordiak arranged with the County to donate six room dividers and a computer desk. This means that the computer and photo copier can be moved down stairs-giving us more room for artifacts storage upstairs. Grace Leigh, Gloria Hayes and Jim Bauer have agreed to serve on a collection committee. **We need volunteers** for sitting the Museum on Saturdays from noon until 2:00. Also for our next fund raiser which entails working a concession stand at the MetroDome for at least 10 Twins games. We can make between \$3000 - \$5000 in this endeavor.

Our Congratulations to Michele Leigh who was granted an internship with the Minnesota State Historical Society. Michele did such a beautiful job on the "Family Album" Exhibit last summer and she and her mother Grace and Sue M. did much of the cataloging.

See you at the Lasagna Dinner!

Char

#### **TIME TO RENEW YOUR MEMBERSHIP**

If you have not yet renewed your membership, please do so today. We need your continued support and your input. Use the handy membership form on the back of this newsletter and mail to

Fridley Historical Society  
611 Mississippi St.  
Fridley, MN 55432

#### **HISTORY**

*The following was taken from the book **Anoka County** and is the history of Edward and Anna Hartman.*

*Edward and Anna Hartman bought the Ficker farm in Fridley Township in 1907. The house they moved into was one year old and the house, barn and sheds were about one block north of Rice Creek on the East River Road. The Hartmans were truck gardeners and sold their produce in the city of Minneapolis. They raised tomato and other slow growing vegetable plants in hot beds. They sold the plants to the stores in the cities as well as to neighbors. The Hartmans had four children. Carl, the eldest, was fourteen when they moved here along with his twin sisters, Caroline and Mable. A few years later, Clifford was born. Mr. Hartman farmed for twenty years. When he passed away in 1927, Carl farmed the home place as a gardener until the area around here began to grow into a village and then a city, and the sixteen acres had to be platted and sold. There are thirty-four homes on the farm and it is called Hartman Circle.*

*Carl Hartman married Hazel Nelson from Constance in 1928. Carl had a store built on the southeast corner of the land. He sold groceries, and the Fridley Post Office was located there. The Post Office was discontinued after a few years, when mail came out from Columbia Heights. Carl and Hazel had one daughter, Alice. She married John Ganter. They live in Ham Lake. Their three children are Robert, Karen, and Carl.*

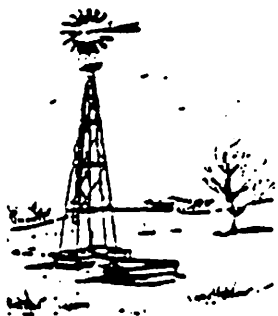
*Mable Hartman married James C. Woods. They built their home on the north east corner of the farm. They had one son, Warren. He married Karen Miller and they have three children, Scott, Shelly, and Stephen. They live in the city of Fridley.*

*Carl Hartman was the first mayor of the city of Fridley, and held the office for five years. Many changes have come about, but the boundary lines of the school districts have remained the same.....*

*The direct Hartman family have all passed away. Carl's wife, Hazel Hartman, still resides on Hartman Circle.*

*Editor's note: Today, Hazel Hartman lives in the Fridley Convalescent Home.*





# Fridley Historical Society

611 Mississippi Street N.E.  
Fridley, Minnesota 55432

---

MEMBERS NEWSLETTER

---

Vol. 5, No. 2, May 1992

---

## *PRESIDENT'S UPDATE*

*I am pleased to report that many things are happening at the museum. Thanks to Gloria Hayes our Lasagna Dinner and Silent Auction netted us over \$1500. Gloria is so proficient as a fundraiser! We truly appreciate her efforts.*

*The computer and copier have been moved down stairs and we are ready to*

*start organizing the three offices upstairs. Our sincere thanks to Lillie and John Meyer for their gift of two new file cabinets.*

*Harrison Randolph, a member of Jack Hawley's staff at Northern Pump, Northern Ordinance, FMC, came to speak to us about the early days of one of Fridley's largest employers.*

*(Cont. p. 2)*

## INVITATION

You are cordially invited to attend the opening of the newest exhibit at the Museum: Tornadoes, which opens on Wednesday, May 6, 1992. Hours will be from 4 pm. to 8 pm.

Please come and view this newest exhibit!

P.S. If you have pictures or news articles you would like to share, bring those along also. Please identify and label with your name.



---

### MAY MEETING: JIM HILL speaks on TORNADO SAFETY

Our May Regular meeting will be on Monday, the 11th, at the Museum. Our speaker will be Jim Hill, Public Safety Director for the City of Fridley. He will speak to us on Tornado Safety and perhaps the History of the Fridley Police Department.

COME AND INVITE YOUR FRIENDS!!

---

*He was delightful! The Society made him an Honorary Member of the Historical Society.*

*We are now preparing an exhibit on Fridley tornadoes- 1925-1929-1965-1986. We would appreciate any help you members can give to this. We will open the exhibit on May 6th. We need volunteers!! For 49er's Days the museum will be open on Sat., June 20, 1992, from 9 am to 4 pm. The Fridley Senior Crafters will have a craft and bake sale in the building.*

*Trust you all are looking forward to summer. After all these rainy days the sun will be very much welcomed!*

*Chan Fitzpatrick*

#### TIDBITS:

From the River View Crier printed at the Riverwood School we get a look at what Community Life, a column in the paper of May 8, 1950, had to say:

The city papers are now carrying the "Clean Up; Paint Up" theme, and we would like to join with them in this theme for our community.

An early start in cleaning up the community will enable all of us to enjoy our yards more throughout the summer (if it ever arrives).

When the warm weather does arrive, we will want to be out enjoying the sun and the various summer sports, such as slapping mosquitoes and rubbing on sunburn cream, so let's do the dirty work now!

To get back to the serious side: we

do want to be proud of our community, and a clean community is something we can and should strive to maintain. Your bit will go a long way to complete the picture.

Editor's note: This points out that some things remain the same!!

#### CALENDAR OF EVENTS

May 6, 1992-Tornado display opens at the Museum. Hours will be 4-8pm.

May 11, 1992-Monthly meeting at the Museum. 7 pm. Jim Hill, Public Safety Director speaks on Tornado Safety, and the History of the Fridley Police Dept.

June 17-21 Fridley 49er's Days

June 20, 1992-The Museum will be open from 9 am to 4 pm.

#### DONATIONS

Our thanks to

John and Lillian Meyer for two new filing cabinets.

Virgil Herrick for a desk and filing cabinet.

## HISTORY

The following is taken from the HISTORY OF THE UPPER MISSISSIPPI VALLEY written in 1881:

Fridley

The following is taken from the book HISTORY of the UPPER MISSISSIPPI VALLEY written in 1881:

Fridley lies in the extreme southern portion of the county. It is bounded on the east by Ramsey county, and on the south and west, by Hennepin county.

The western portion of the town is chiefly prairie, but the eastern part is bluffy, and covered with small scrub oak. Rice creek crosses in a westerly direction, forming a good water-power near its junction with the Mississippi river.

.....

On the 12th of April, 1870, a petition, signed by a majority of the voters of Manomin county, for admission as a township, was presented to the County Commissioners of Anoka county. The petition was granted, and the first election held on the 26th of April, 1870....

Manomin Flouring Mill is located near the mouth of Rice creek, and was built in 1871, by W.H. Hale, of Pennsylvania, but is now owned by Robert Paterson, of the same State, and leased by P.H. Hughes, who is running it as a custom mill. It is 35x110 feet, and three stories high, and contains seven run of stones, one set of rolls, thirteen middlings purifiers, fourteen bolting chests, and all other necessary machinery. The capacity is one hundred and fifty bannels per day.

The Protestant Episcopal Church is the only church organization in the town. A church was erected in 1858, by Rev. Mr. Chamberlain, who was

located at St. Anthony, and held services here for a time, but there seems to have been no regular Pastor since. A few years ago, Dr. Knickerbacker, of Mpls., held services for some time, but those have been discontinued. The building was used as a school-house for nearly five years.

The whole town formerly comprised one school district, but about 1873 it was divided into two, as it still remains. Previous to the division, school was kept in the Episcopal Church, on section fifteen. The school-house in district number 23 was built in the year of the division, and that in number 32, in 1875, they, in the meantime, having utilized an old building, moved from the village of Manomin.

Fridley has a population of 257, according to the last census,.....

More later.....



## Society Plans WWII Exhibit at Fort Snelling History Center

World War II affected Minnesotans throughout the state, from children collecting scrap metal to the men and women who served in the armed forces. It forever changed the lives of those who experienced it.

For many Minnesotans, memories of World War II center on Fort Snelling. Over 300,000 people were inducted at the Fort during the war, and thousands more passed through it to be processed as they returned from overseas. Railroad battalions trained there, and language interpreters studied at its Military Intelligence Service Language School.

Although the Society's programs interpret Historic Fort Snelling as a frontier post, it reached its fullest expansion during the 1940s. The Fort took on the trappings of a small city, with its own newspaper, streetcar line, movie theater, and railyard.


With the country's attention now focused on the 50th anniversary of its involvement in World War II, the Society plans to develop an exhibit at the Fort Snelling History Center to examine the impact of the war on Minnesota. If fund-raising efforts are successful, the exhibit will begin production in the spring of 1993

and open by May 1994.

The Society will travel around the state to present the exhibit's concept to veterans groups and service organizations and to seek their financial support. Anyone interested in volunteering to assist in this effort or in receiving more information about the exhibit can call Stephen Osman at (612) 726-1171.



Editor: Lillian Meyer  
Fridley Historical Society  
611 Mississippi St. N.E.  
Fridley, MN 55432



# Fridley Historical Society

611 Mississippi Street N.E.  
Fridley, Minnesota 55432

---

MEMBERS NEWSLETTER

Vol. 5, No. 3, August 1992

---

## DEAR MEMBERS;

As you all know, the Fridley Historical Society was incorporated in 1985. In a little over three years we raised \$85,000 to renovate and make the building handicap-accessible. Seven thousand of that \$85,000 was a no-interest loan from the City of Fridley for an automatic outdoor sprinkling system and landscaping. This project was done at the request of the city. The loan is to be paid off in ten years. It is the consensus of the Board of Directors to pay off that loan as soon as possible.

I am making a special appeal to all members: individuals, families, businesses, organizations and churches to **help us retire that loan**. The Board of Directors thanks you for your support in the past and we hope you will support us in this project.

Sincerely,  
Char Fitzpatrick, President

---

### SEPTEMBER POT LUCK SUPPER

September is a good time to see and visit with friends who have been away or busy with other activities during the summer. What better way than to invite them to share a meal and fellowship!

Date: Monday, September 14, 1992

Where: Fridley Museum at 611 Mississippi St.

Time: 6:00 pm

Bring: Food to share-hot dish, salad, dessert, etc.

**Invite a guest to come with you and enjoy the evening!**

## RED RIVER OX CART TRAIL

The Red River Ox Cart travelled from Pembina, N. Dak., which was in the Red River Valley area and Canada, down through primitive Minnesota territory to St. Paul...

The Red River Ox Cart Trail in 1844 was very similar to East River Road as we know it today. There were few variations in directions as it ran through the County of Anoka along what is now known as East River Road. The ox carts at that time were very unique in that as far as we are able to tell through research, they were the only carts of that kind in the world. The nearest thing to them was the Normandy Cart in France. The carts were made primarily of oak and cost about \$15 to make. They could carry weights of furs and whatever of up to a thousand pounds per cart. They were pulled by an ox or horse and ran tandem two, three, or more carts together with a driver for each three to five carts. The drivers were called "boisbrule"... Their ancestry was Indian, Scottish, and French.

The ox cart proved to be a boon to the fur traders because they could carry furs down from Pembina at much less cost by cart than through the Hudson Bay Company. The ox cart going south was loaded with all kinds of hides covered by a buffalo robe, and on the way back north they would carry everything from an occasional piano to sacks of flour... The ox cart could be heard five miles away when they were coming down the trail because of their squeaky wheels, and they would sometimes travel as many as 200 cart in a line at one time. They crossed the river in Anoka in two places, one near the confluence of the Rum River and the Mississippi River and the other not too far from the Anoka State Hospital as it stands today. They then proceeded down through Coon Rapids and Fridley...

The ox carts were well-known in the area... About

200 pictures were used in doing research to determine what the carts looked like. The Ox Cart Trail was being used from 1844 on until 1857, ... The ox cart use dwindled off and was no longer used at the turn of the century. The Ox Cart Trail in 1857 became known as the U.S. Military Road and by 1859 it was shown as such on a map....

The article above was taken from the booklet, Historical Mural-1857-

Editor: Lillian Meyer  
Fridley Historical Society  
611 Mississippi Street NE  
Fridley, MN 55432



---

## Tidbits

The Tornado Exhibit attracted over 250 people who viewed the display! We are just delighted so many people came!

**Volunteers are needed!** If you would be willing to spend a few hours per month at the Museum, there are many tasks needing your time.

Will the person who dropped off the box with pictures, ledgers, inflatables and a wonderful iron kettle and spoon please let us know so we can give you credit for this contribution?

## CHURCH HISTORY

The Michael Servetus Unitarian Society was organized on June 1, 1966 by 23 Unitarians. In May three members of the First Unitarian Society in Minneapolis had stopped at the small Episcopal Church on East River Road, which was for sale, to look it over. They decided the facilities would be just right for a fellowship to serve the Unitarians in Anoka County. They, with three other couples, decided to found a fellowship. The name, Michael Servetus Unitarian Society was chosen as the name of the new fellowship in honor of the first Unitarian martyr.

Four years later, in 1970, the land where the church now stands at 6565 Oakley Drive NE was donated and a Fellowship Hall was built. The original sanctuary was moved from East River Road and became the second story of the church which seated 72.

Many activities were developed to meet the interests and needs of the

members. The Unitarians have supported many social action programs. A committee planned Sunday services. The Religious Education Department, led by members, provided for needs of the children.

Looking to the future the congregation supported moving the church sanctuary to ground level and enlarging it to seat 106 and building a second story on top of the Fellowship Hall to house classrooms, a library, meeting room, and offices. The architect for this project was directed to preserve and maintain the 100-year old church sanctuary and add on while keeping the same style.

Much of the funding for this project came from the Labor Day Auctions, and from a Capital Fund Pledge Drive.

---

### MEMBERSHIP RENEWAL/NEW MEMBER APPLICATION

Name \_\_\_\_\_ Phone \_\_\_\_\_

Address \_\_\_\_\_

Yearly dues: Individual: \$10; Club & Church \$20; Business \$50

I will help retire the loan. My contribution \_\_\_\_\_

Mail to Fridley Historical Society, 611 Mississippi St., Fridley, MN 55432. Membership is from January 1st to December 31st.

## CALENDAR:

Sept. 14, 1992 Pot luck supper

Students from the Middle School will be visiting the Museum. About 150 pupils are expected to view the displays and the Museum.

Sept. and Oct. The plan is to have an exhibit on the history of District 6, 23, and the current District 14 (all were/are in Fridley.)

October We would like to organize a reunion for those people who attended classes in the old Hayes Annex-the current Museum. Please contact one of the board members with names of anyone you know who were students here.

Sept. & on Watch for Fridley Historical Society articles in the Focus. These will be appearing twice/month.

---



Editor: Lillian Meyer  
Fridley Historical Society  
611 Mississippi St. N.E.  
Fridley, MN 55432



# Fridley Historical Society

611 Mississippi Street N.E.  
Fridley, Minnesota 55432

MEMBERS NEWSLETTER

Vol. 5, No. 4, September 1992

## REUNION PLANNED for FORMER STUDENTS

A REUNION FOR FORMER STUDENTS and children whose parents attended either School Districts 6 or 23 is planned for our October 12th meeting.

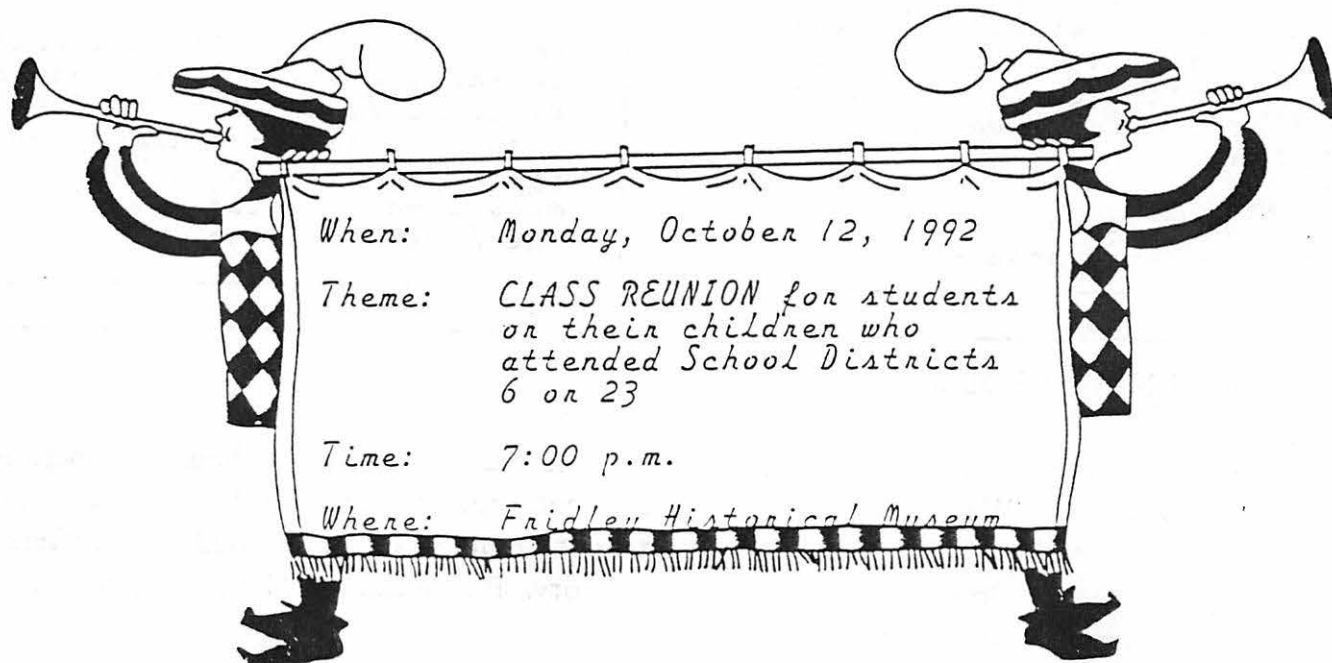
WE NEED HELP from YOU!!! We need information from you! We need names and addresses of people who attended either district. We want to invite them to share the fun of the evening! Please call 571-0120 or write to the Museum at 611 Mississippi St., Fridley, MN 55432 with names and addresses. We will return your phone calls.

RENEW FRIENDSHIPS! ENJOY VISITING! SHARE EXPERIENCES!

If you have pictures, papers, memorabilia, anything from those days, bring these items along to share with others. Best of all, bring former students with you to the October meeting!

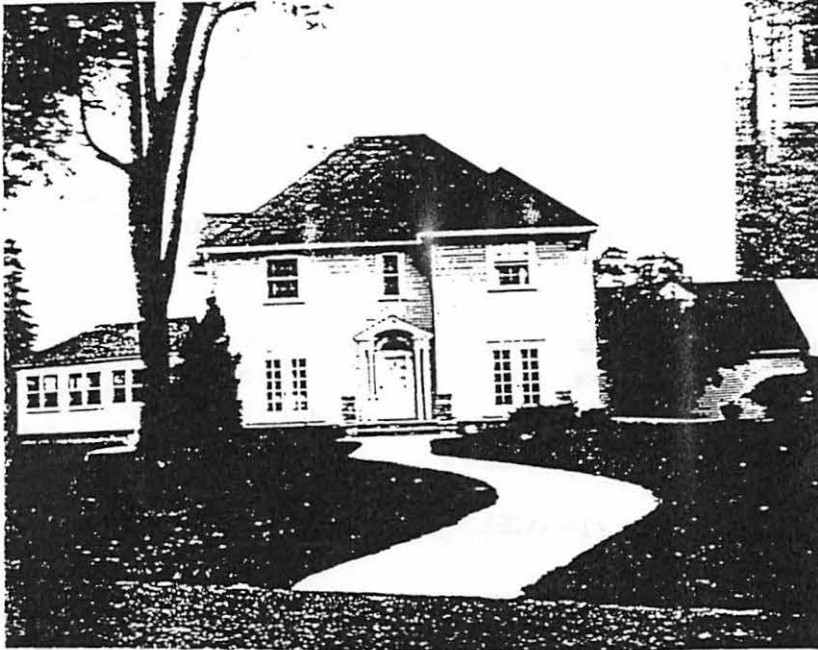
---

### HEAR YE! HEAR YE! ANNUAL MEETING TIME!!



## The Riedel Farm House

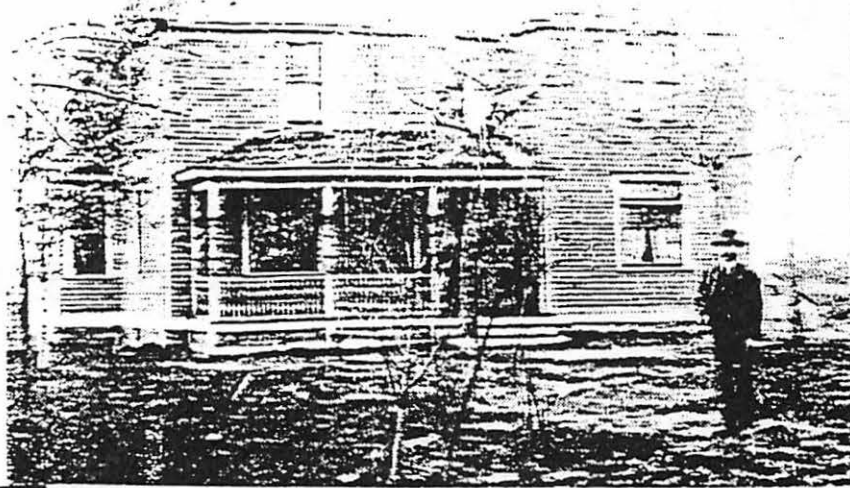
*From that time to now:*



1992

Albin C. Riedel, a German emigrant, homesteaded 500 acres of this area in 1883. The original house, now called the Mississippi Riverfront Park Reception House, was built shortly thereafter. It stands just west of E. River Road across from FMC Corp.

Mr. Riedel began a dairy operation and raised chickens and pigs. He



also planted several apple and plum orchards.

He and Ida Nelson were married in 1889 and had 9 children: Minnie, Edward, William, Walter, Arthur, Roy, Alice, Alfred, and Chester. With the help of the family the dairy operation grew. Albin started milk delivery routes throughout Mpls. and St. Anthony.

Mr. Riedel died in 1929 and his wife died in 1937. Two of the sons Edward and William formed a corp. called Sanitary Farm Dairies.

In the early 1920's, the family closed the dairy operations at the original farm. In the 1930's, the farm was used as a summer cottage for the remaining family. You can see the many changes which have been made to the house over the years.

### DOCENTS NEEDED

We are in need of docent volunteers to staff the museum during its hours of operation: Saturdays, 12-2. We have a group of reliable docents, but we need more. Ideally, there should be two docents on duty at all times. The job is not strenuous or complicated, and it offers the opportunity to help others learn about our history. Please call the Museum or contact any board member if you are interested.

## ELECTION OF OFFICERS AND DIRECTORS

At our October Annual Meeting we will elect officers and directors for 1993. The nominating committee presents the following slate

President

Vice-President

Treasurer

Jerry Johnson

Secretary

Corine Kirkham

Directors (2)

Gloria Hayes

Ed Berntson, Chair, Nominating Committee

## Museum Display

Come and see our latest display at the Museum. It is FRIDLEY ALBUM - a look at rooms from the late 1900's and the 1920's and '30's. We have a wonderful piece (on loan from the Banfill/Locke House) as well as a baby buggy (on loan from Gloria Hayes). COME and bring your family and friends!



## Student Days at the Museum

On Tuesday and Wednesday, September 15 & 16 groups of Middle School students had the opportunity of visiting the Museum and gaining some information about the history of Fridley. There were 120 students who spent several hours exploring the Museum and learning about Fridley's past. Many volunteers served as docents those two days. Our thanks to them and to the students who came!



## MEMBERSHIP RENEWAL/NEW MEMBER APPLICATION

Name \_\_\_\_\_ Phone \_\_\_\_\_

Address \_\_\_\_\_

Yearly dues: Individual: \$10; Club & Church \$20; Business \$50

Mail to Fridley Historical Society, 611 Mississippi St., Fridley, MN 55432. Membership is from January 1st to December 31st.

## DO YOU REMEMBER?

These School District 23 minutes were taken from the Columbia Heights Record.

### **OFFICIAL PUBLICATION:**

#### **MINUTES OF BOARD OF EDUCATION**

Independent School District 23

Oct. 27, 1953

Regular meeting called to order by Chairman Garten. All members present, Supt. Hayes and Mr. Lindstrom also present.

Moved by Chesney seconded by Bloom to pay bills as presented, and orders were drawn for same.

Moved by Johanson seconded by Chesney, at request of parents the board agrees to allow Raymond Burkite to quit school.

Moved by Johanson seconded by Chesney to spend up to \$200 on furnishing teacher's room.

Moved by Johanson seconded by Bloom to authorize Mrs. Gerrety to sign certificate of acceptance on new building.

Moved by Chesney seconded by Bloom to hire Mrs. Hayes to set up school library.

Moved by Bloom seconded by Sprungman to set up mill rate as a total of 105 mills.

Meeting adjourned at 9:30.

Mrs. Christine A. Gerrety  
Clerk

### **OFFICIAL PUBLICATION**

#### **MINUTES OF BOARD OF EDUCATION**

Independent School District 23

Nov. 23, 1953

Regular meeting called to order by Chairman Garten. All members present except Bloom. Supt. Hayes also present.

Moved by Johanson seconded by Sprungman to pay bills in amount of \$2,623.90 and orders were drawn for same.

Moved by Chesney seconded by Gerrety to reimburse the county for overpayment.

The mill rate was revised to read:

Mills  
65.49 Maintenance and  
Operation

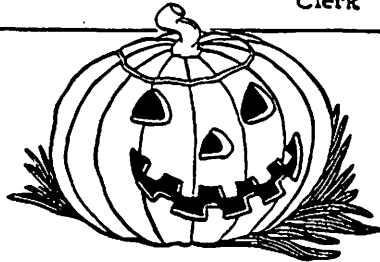
1. Co 1 mill tax

40.25 Bonds and  
interest

Total 106.74 mills

Meeting adjourned at 9:45.

Mrs. Christine A. Gerrety  
Clerk



## GRAND OPENING OF THE MINN. HISTORY CENTER

The History Center will have it's Grand Opening and will be open to the public on Sat., Oct. 17, and Sun., Oct. 18 from 12 noon to 6:00 p.m. You may tour the building and the museum, shop in the stores, and enjoy entertainment throughout the day.

This should be an exciting experience! We have all waited so long for the completion of the facility!

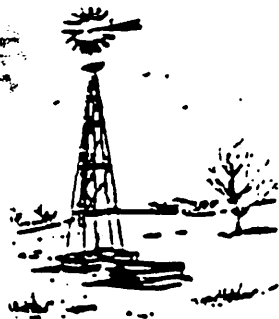
The new History Center is located one block from the St. Paul Cathedral.



### WISH LIST

A dehumidifier is needed on the lower level to help remove excess humidity during the summertime. If you have one you would be willing to donate, please call the Museum and we will arrange to have it picked up.





# Fridley Historical Society

611 Mississippi Street N.E.  
Fridley, Minnesota 55432

MEMBERS NEWSLETTER

Vol. 5, No. 5 NOVEMBER 1993

## PRESIDENT'S LETTER

This is a time for review and for giving thanks. I want to use this space to thank the following people:

Marion Anderson	Edna Ask	Lillian Meyer
Herb Bacon	Ed Berntson	Sue Miskowic
Bill & Esther Campbell	Ardy Chesney	Irvin & Jean Peter
Ed Fitzpatrick	Elizabeth Frischmon	Fred Schultz
Chris Gerrity	Chuck & Gloria Hayes	Glenn Theorin
Pearl Hicks	Charlie Johanson	Sue Meyers
Donald Johanson	Earl Johnson	Ruth Mueller
Jerry Johnson	Corine Kirkham	Cindy Robb
Jim Kordiak	Jerry Manley	Edith Thompson

These good people have volunteered their time in the following projects:

Carpentry around the lift  
Electrical work  
Building maintenance  
Making curtains to block off cloak rooms  
Sending card of cheer  
Doing money matters  
Organizing filing cabinets  
The Lasagne Dinner-which netted us about \$2000  
Donation of tornado books Night to Remember  
Correspondence  
Taking down and setting up new exhibits  
Selling ice cream  
Helping us to get donations of room dividers from both the  
county and General Mills-Fridley Plant  
Making display cases  
Acting as docents



Thank you!

To put a value on their contribution of time add up all the volunteer hours this year and multiply it by \$5.00 and as you can see it comes to thousands of dollars.

I wish you a wonderful holiday season and the very best to you in 1993!

Char Fitzpatrick



### CHRISTMAS TIME AT THE MUSEUM

Come to the Museum and share an old-fashioned Christmas. The Museum will be decorated for the holidays starting in early December. So stop in and share the joys of the season with us. Bring a tree ornament or other decoration if you have one to spare. **Bring your family with you!**

### DO YOU REMEMBER?

#### My Fond Memories of District 23 by Phil Novack

*I can still remember my first day of school at District 23: Walking across the sand dunes of Fridley from 60th St. to University Ave; and stopping to pick the sand burrs, or "stickers" out of our new clothes. Our new clothes were hand me downs from other people. My dear Mother, Mary, raised 4 children alone, while my Dad was serving in World War II. I remember that Mom tried her best. We usually had peanut butter sandwiches to take to school for lunch. I always tried to exchange my sandwiches with other students. Sometimes I was lucky, and sometimes not. When winter came to Fridley I still had to walk to school. Sometimes our neighbors, the Petersons, gave me a ride in their 1940 grey 2 door sedan.*

*I can remember a big "bully" would pick on me outside at recess-time. I finally took a punch at him and missed. He shoved me down on the ground and I threw dirt in his face. Then I got up and ran inside the school and crawled on top of a big upright cabinet which had library books on the shelves, hoping he wouldn't find me. At recess time I would go to the window on the west side and watch him from inside the school. He would see me looking at him, and come inside to get me. Then I would hide on top of the cabinet. One day I fell asleep in my hiding place. Miss Cook, my school teacher, came inside before she called the kids in from recess. I heard the bell and tried to*

*climb down so as not to be seen by anyone. She asked me how I got past her without her seeing me. She noticed some grey dust on my back side and my shirt. Then I had to tell her where I was hiding and why. I told her about the bully and why I was hiding on top of the cabinet. Needless to say, he never picked on me again.*

*I can remember the frost built up on the windows. I would scratch the frost off the windows; also I'd stick my tongue on the frost and watch the steam on the windows.*

*In the mornings when we got to school, it was cool inside the building. We would hang our coats and mittens on a numbered hook in the coat room in back of the classroom. There was also a long rubber mat for our overshoes. Then we would recite the Pledge of Allegiance before classes started.*

*At noon and recess time we would go outside during the winter and throw snowballs at each other, and make snow angels. When the bell rang we would go inside and hang up our wet coats and mittens on our assigned hooks. Soon you could smell the pungent odor of these wet clothes.*

*I can still hear old man Holly's airplane as he would fly over our school. It would just rattle the windows. We kids would run to look out of the windows to see him fly by. He flew really low. He would take off from Northern Pump Ordinance. I guessed he owned the plant or was one of the big shots there. There were some days when he would scare the pigs on a neighboring farm which was about a half mile south of the school. The pigs*

### TIME TO RENEW YOUR MEMBERSHIP

If you have not yet renewed your membership, please do so today. We need your continued support and your input. Use the handy membership form on the back of this newsletter and mail to

Fridley Historical Society  
611 Mississippi St.  
Fridley, MN 55432